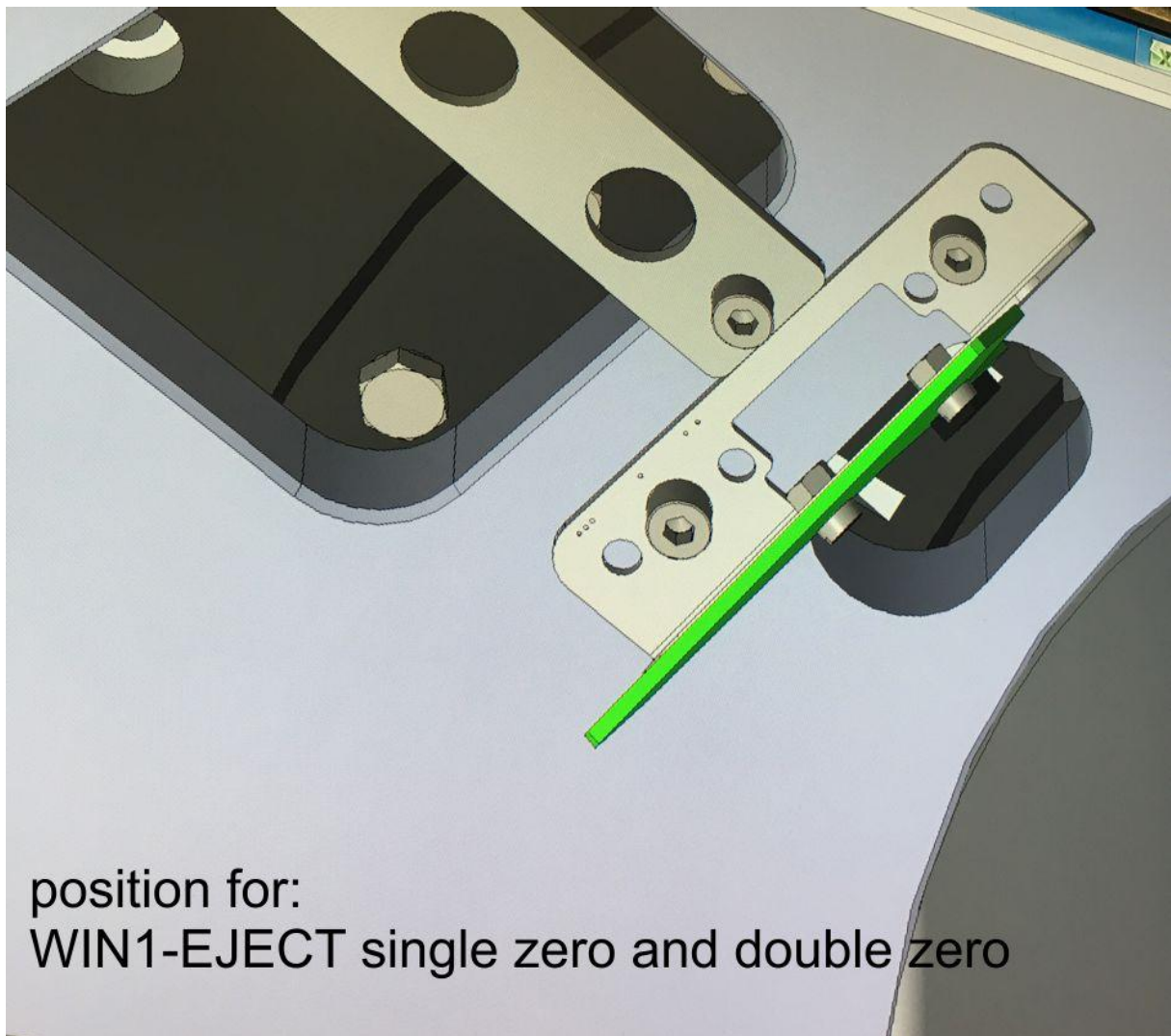
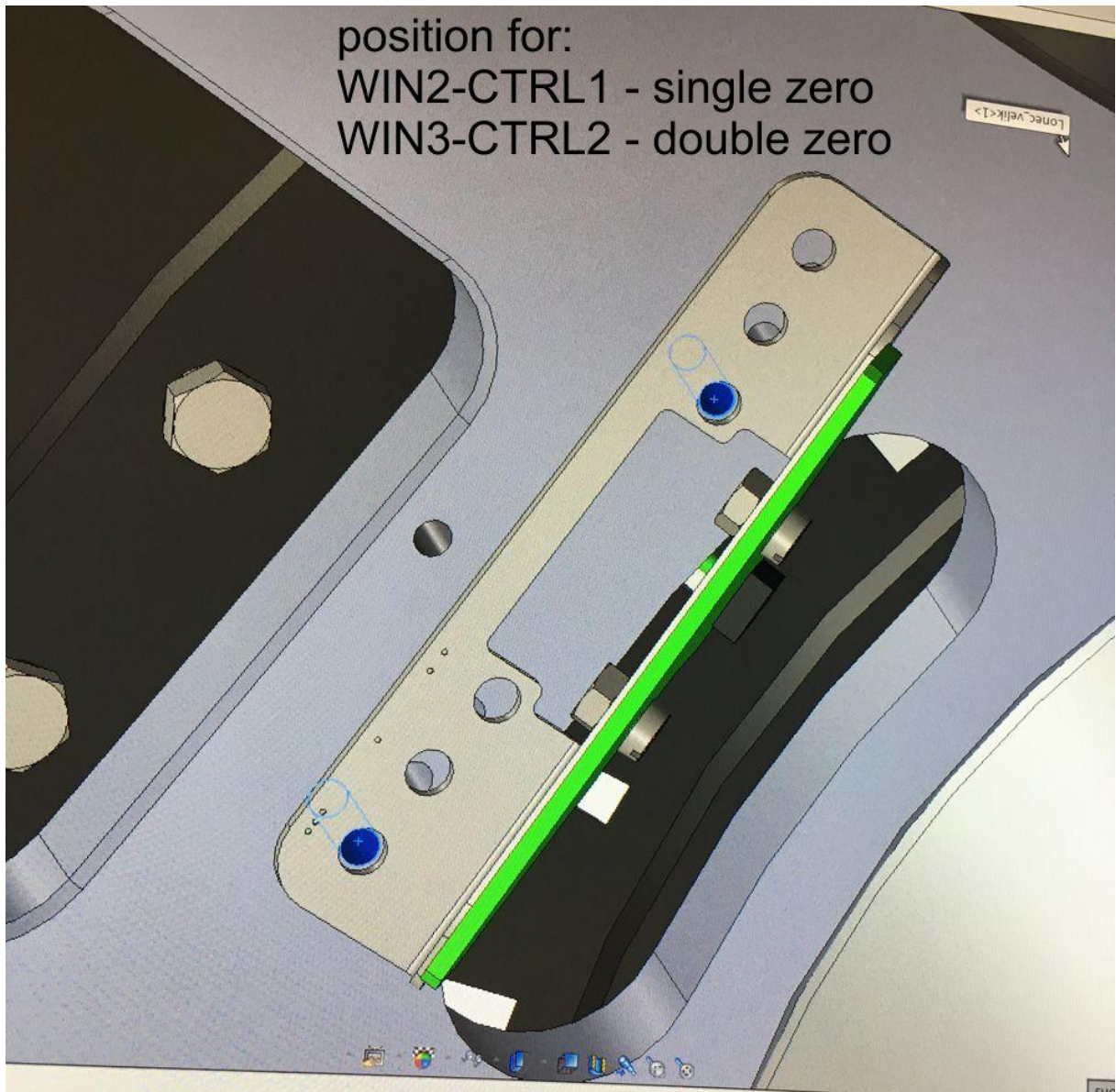


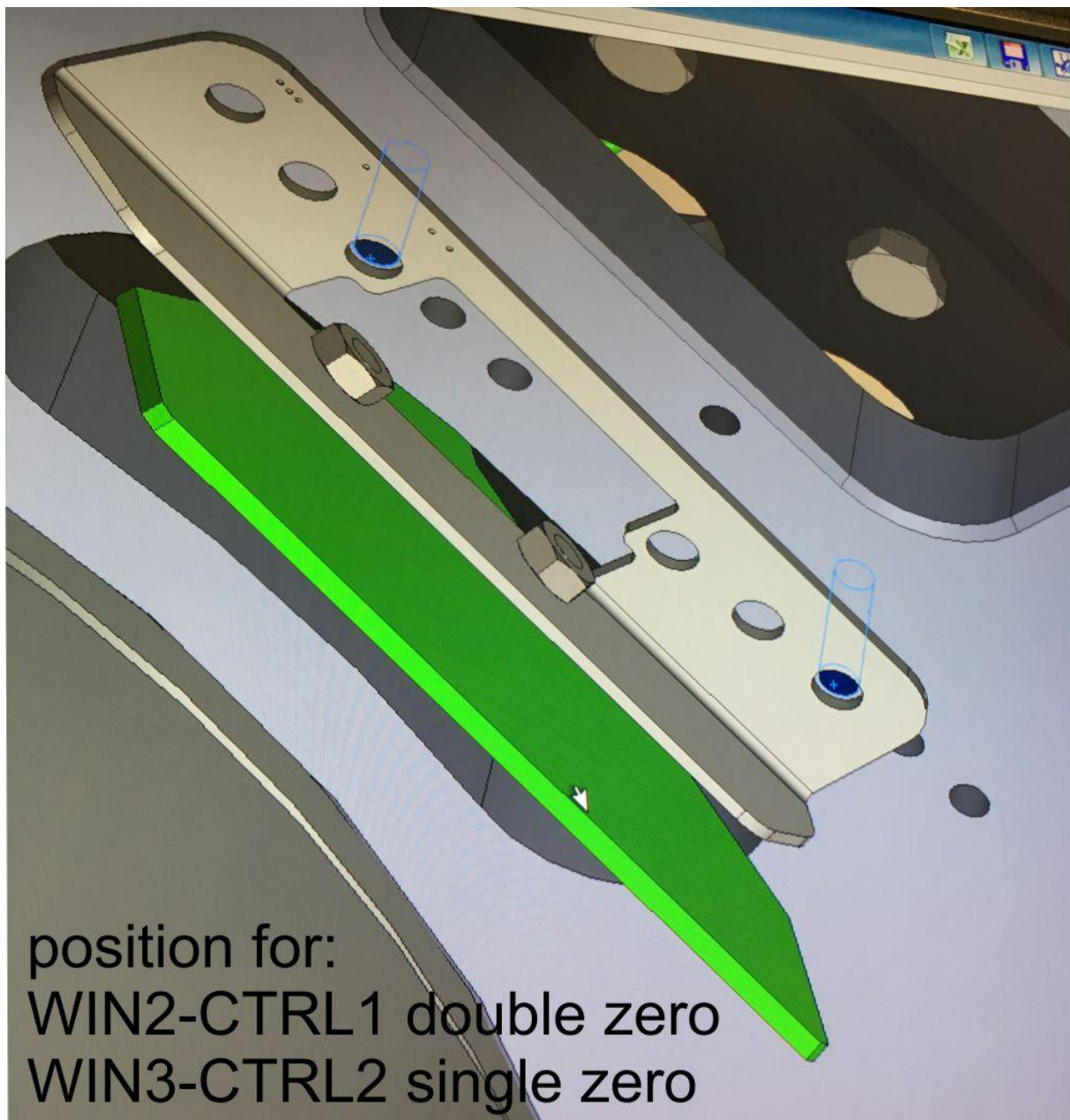
IMAXA Cylinder sensor positions

Sensor positions depend on single or double zero configuration. Sensor position for WIN1-EJECT is equal in both configurations. Sensor WIN2-CTRL1 and WIN3-CTRL2 differ. Mounting holes on cylinder plate stay the same between two configurations, only mounting holes on holder change. Please check the following images to get a clearer picture.

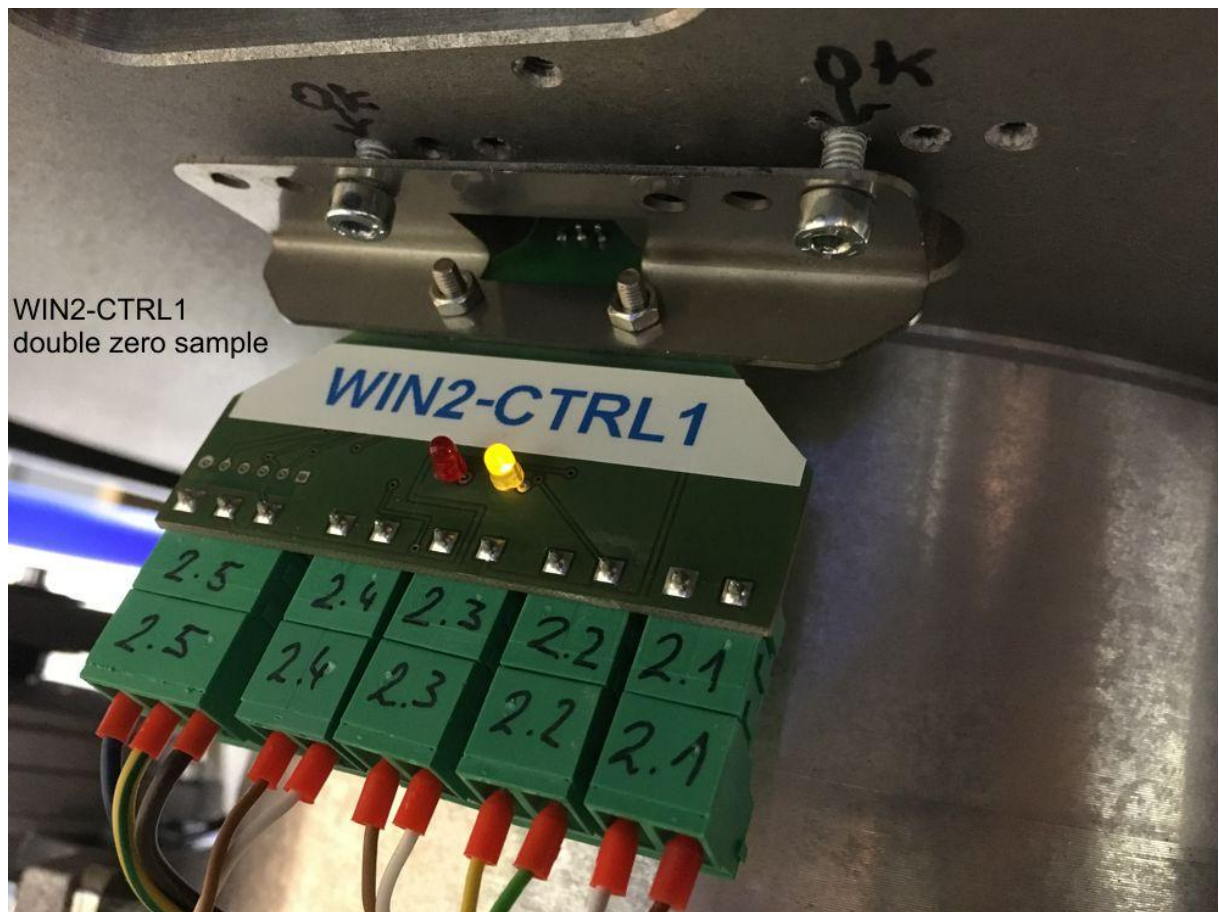


position for:
WIN2-CTRL1 - single zero
WIN3-CTRL2 - double zero





WIN2-CTRL1
double zero sample



WIN3-CTRL2
double zero sample

